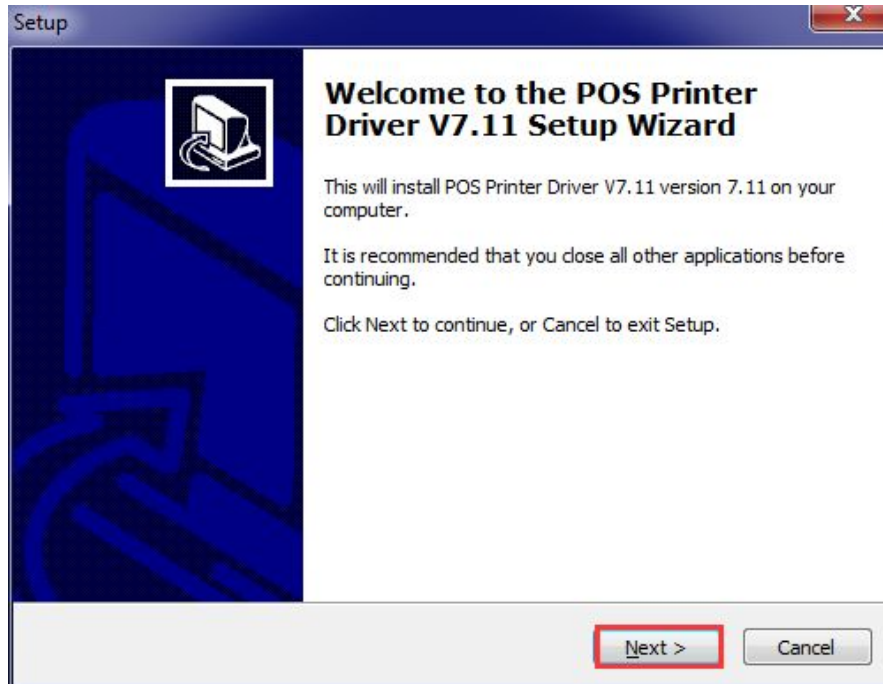


## Graphic Presentations of the Driver's Installation



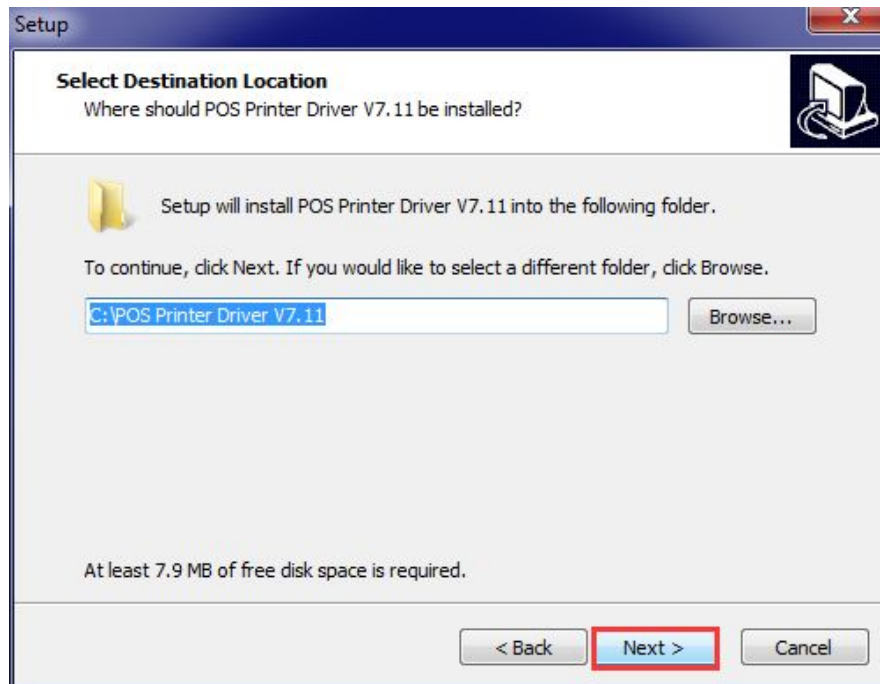
- 1、 Find the address where the driver is stored. Double-click the icon to install the Driver, and click the “Next ” , see the picture as below:



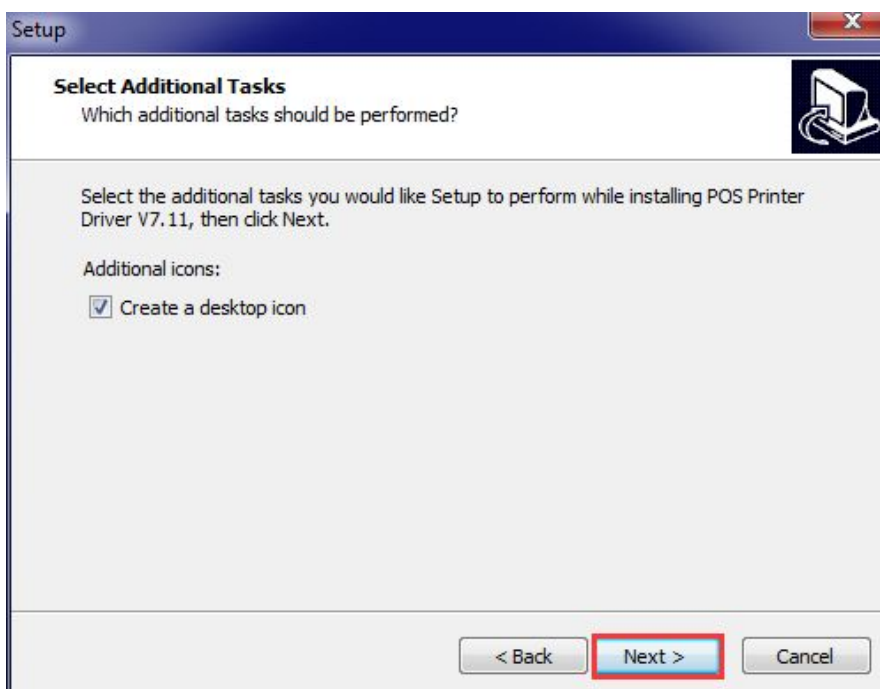
- 2、 Choose “I accept the agreement” and “Next ” , see the picture as below:



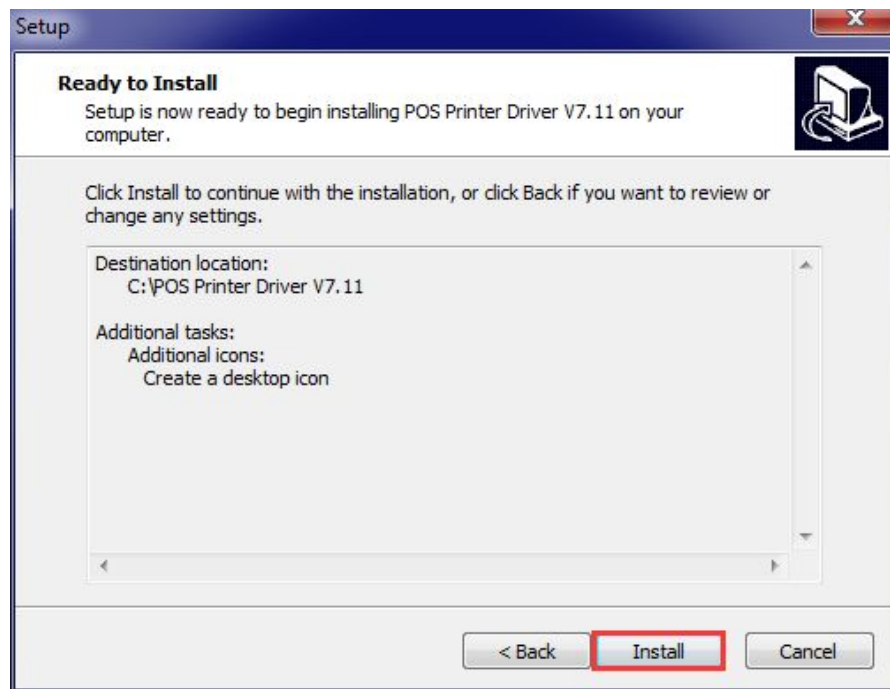
3、 Choose the Default Installation Path, and click the “Next ” , see the picture as below:



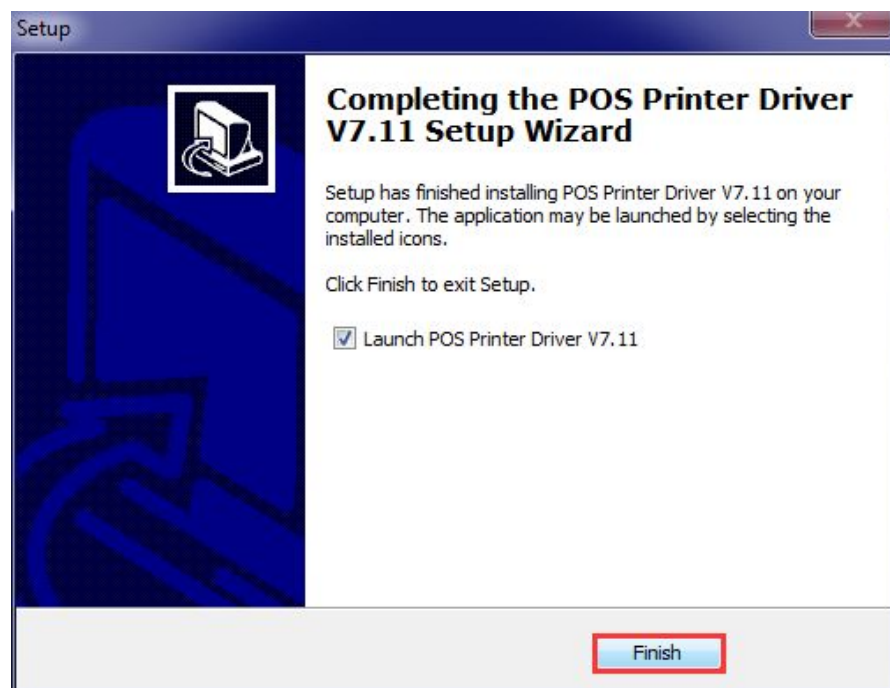
4、 Create a Shortcut on the desktop in order to install the Driver directly next time. Click the “Next ” , see the picture as below:



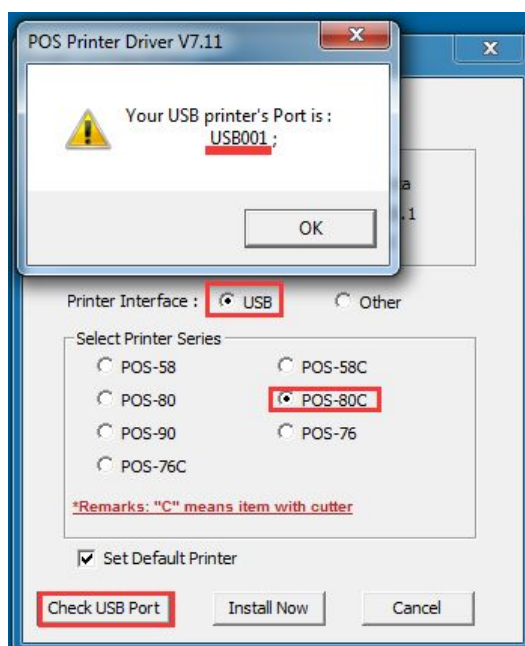
5、 Choose the “Install” , see the picture as below:



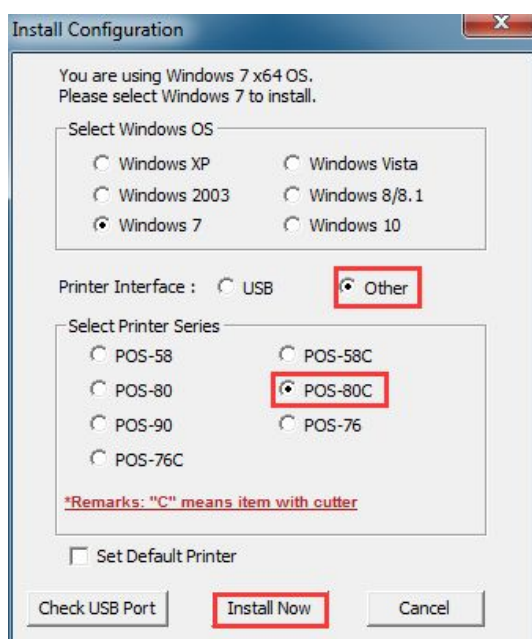
6、 Finish the installation and run the Driver. See the picture as below:



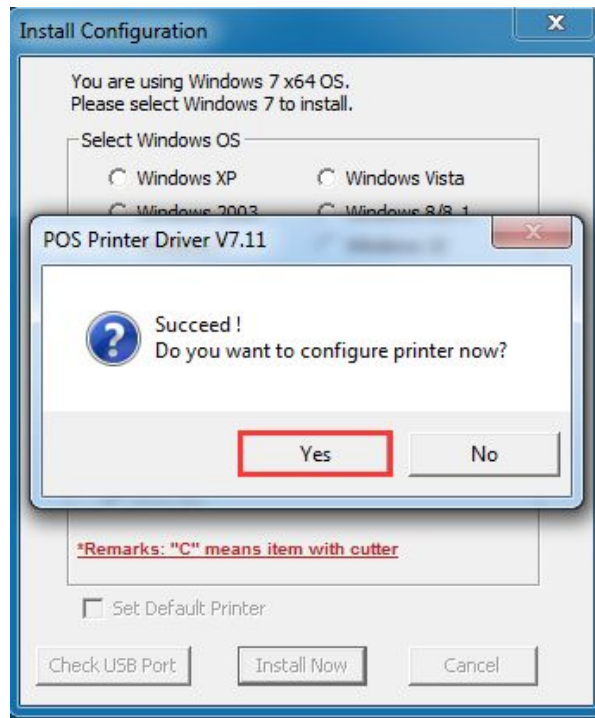
7、The software can automatically detect your computer's system without manual selection。 If printer is USB interface, please choose the “Check USB Port” . The software will automatically detect which port on the computer is used by the printer. See the picture as below:



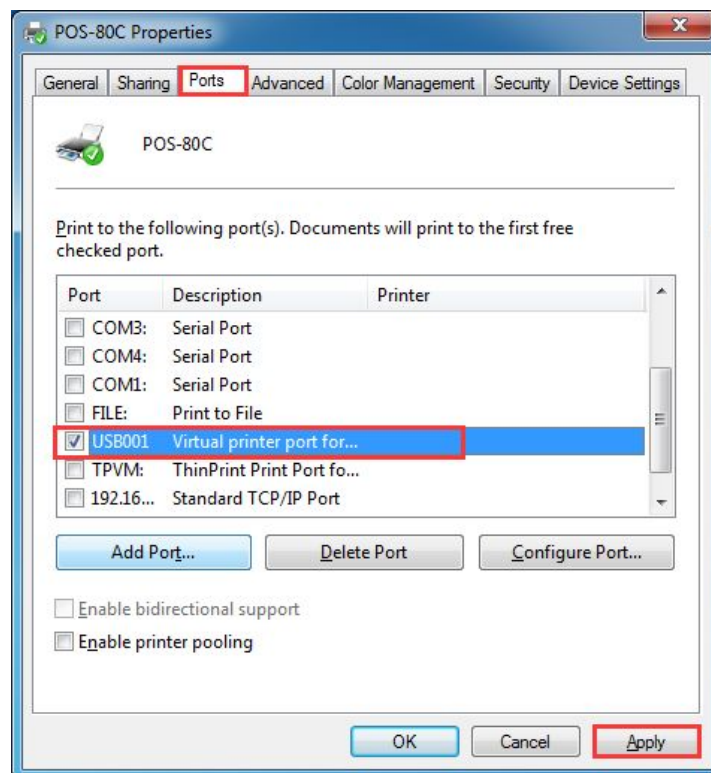
8、 If it is other interface, choose the “Other”. Then click the “Install now” , see the picture as below:



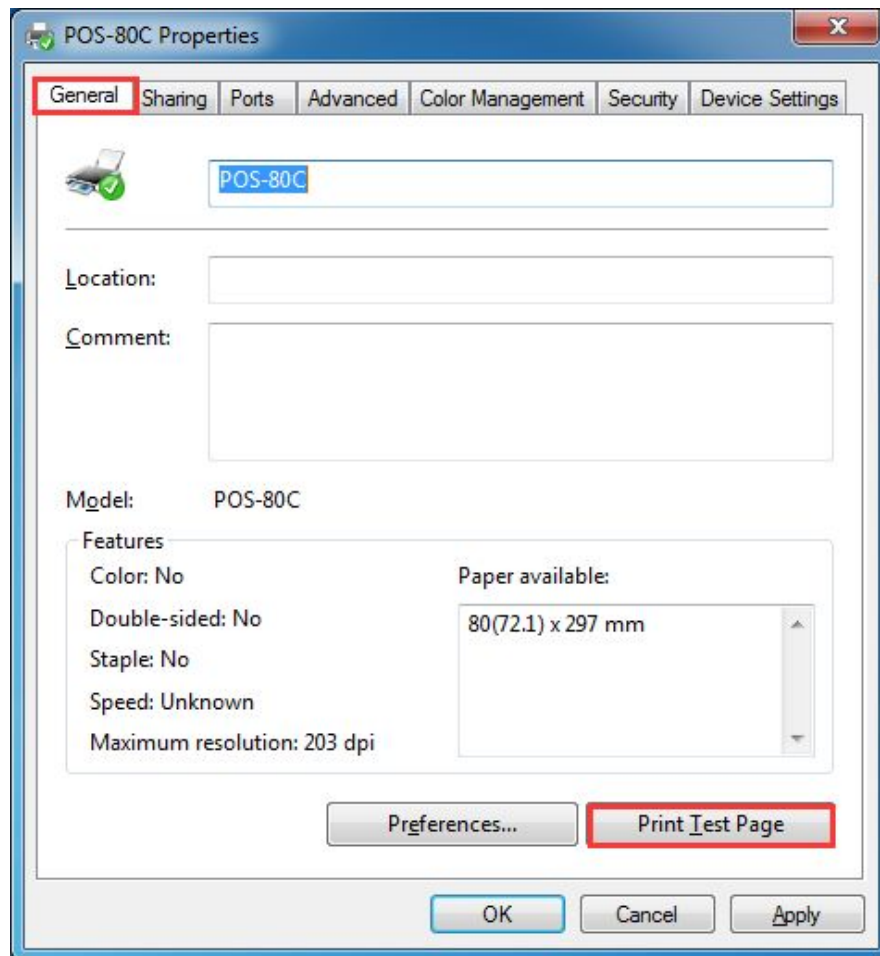
9、Remind your installation is successful. please select the “Yes” to configure the printer port. See the picture as below:



10、Choose the printer's corresponding port and click the “Apply”. See the picture as below:



11、 Select the “General” tab, and click the “Print the Test Page”, see the picture as below:



If there is a test page printed by the printer, it means that the Driver's  
Installation has been finished.